

**Features:**

- \* Dip & Surface Mount Side Entry Type.
- \* Mates with 0.50mm(0.02") sq. pin.

**Material:**

**Housing:** High temperature housing withstands IR and VPR soldering methods.

**Contacts:** Phosphor Bronze.

**Plating:** Gold plated over nickel.  
Tin plated over nickel.

**Electrical Characteristics:**

**Current Rating:** 1 AMP.

**Insulator Resistance:** 5000MΩmin. at DC 500V.

**Contact Resistance:** 20mΩmax. at DC 100mA.

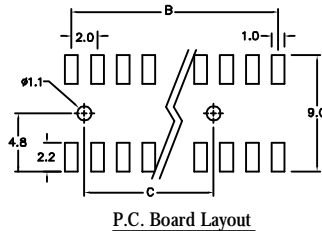
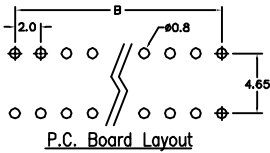
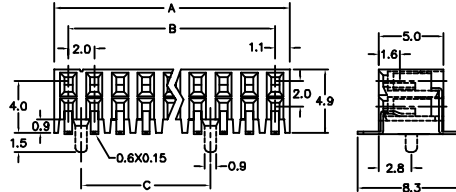
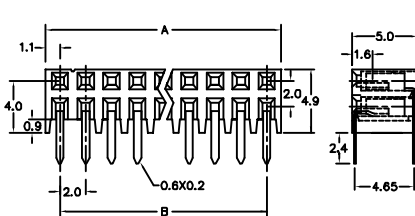
**Operating Temperature:** -65°C~+125°C.

**Max Processing Temperature:** 230°C for 30~60 seconds.

**Mechanical Characteristics:**

**Insertion Force:** 128g avg.(0.50mm sq. pin)

**Withdrawal Force:** 85g avg.(0.50mm sq. pin)



Position	10 Thru 50
Dimension	
A	2.0 X No. of Positions /2+0.2
B	2.0 X No. of Positions /2-2.0
C	10 Pin 4.0mm
	12 ~ 50 Pin No. of Positions /2-8.0

**Ordering information**

PS17- 2                      25                      1                      1                      P  
 Series   Double Row        No. of                1: Gold Plated        1: Dip Type            \*P: With Post  
    Pin Per Row        2: Tin Plated        3: Surface Mount     \*N: Without Post

\* Only apply to SMD type.